

Visual Story

National Print Museum

Table of Contents

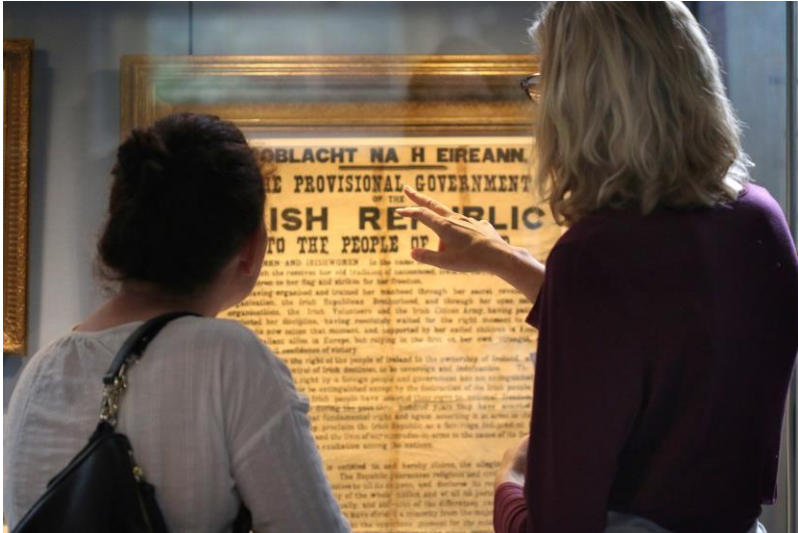
1. Welcome to the National Print Museum
2. Opening Hours and Front Entrance
3. Wheelchair Accessible Entrance
4. Reception
5. Toilets and Baggage Area
6. Shop
7. Getting around
8. The Main Exhibition
9. Videos
10. Composing
11. Print a poster with your name on it!

12. Printing
13. Finishing
14. The Temporary exhibition
15. Creative Corner
16. Café
17. Evacuation Procedure

1. Welcome to the National Print Museum

This Social Story Guide will help you plan your visit to the National Print Museum. You will also find helpful information on what you'll see during your visit and the kinds of activities you can take part in.

The National Print Museum is a museum about the history of Letterpress Printing. On your visit you can watch, read and listen to stories about the history of Printing. If you'd like to do some printing during your visit, you can ask our guides to help you print a poster with your name on it.



2. Opening Hours and Front Entrance

The Museum is open Mondays through Fridays from 10:00 to 16:00 and Weekends from 12:00 to 16:00. It is closed on Public Holidays and Bank Holiday Weekends. If you come on a weekday, the road outside the barracks might be busy and noisy.



At the entrance of the museum, you'll see a sign by the door that says "OPENING HOURS National Print Museum" next to it. The door is wooden and is usually open for you. Once you go through it, you will see another door with a glass window which you pull to open.



3. Wheelchair Accessible Entrance

If you are using a wheelchair, you can enter through the Cafe, which is around to the left side of the building.



You will see a glass door that you pull to open. If you need assistance with laying the wheelchair ramp, then you can press the bell button marked with the wheelchair symbol and a friendly staff member will come out to assist you.



4. Reception

When you enter the Museum, the Reception desk will be straight on front of you. Here, you can pick up self-guided tour booklets, event brochures, and other materials to support your visit. Please come to the desk if you have any questions or need any help.



If you'd prefer to go skip reception, then you can walk straight into to the Exhibition. You can also download our self-guided booklets in advance of your visit.

[Click here to download self-guided tour booklet](#)



5. Toilets and Baggage Area

The toilet is in the back right corner below the stairs. It is an accessible toilet with a changing area and has the universal accessible sign on the door. Next to the toilet is a coat rack and an area to leave your bags if you don't feel like carrying them.



6. Shop

You can find our shop next to the reception. We sell souvenirs that you can purchase for yourself, your friends and your family including hand-printed cards, posters and books! You can see what the Shop is selling on the website:

<https://www.nationalprintmuseum.ie/shop/>

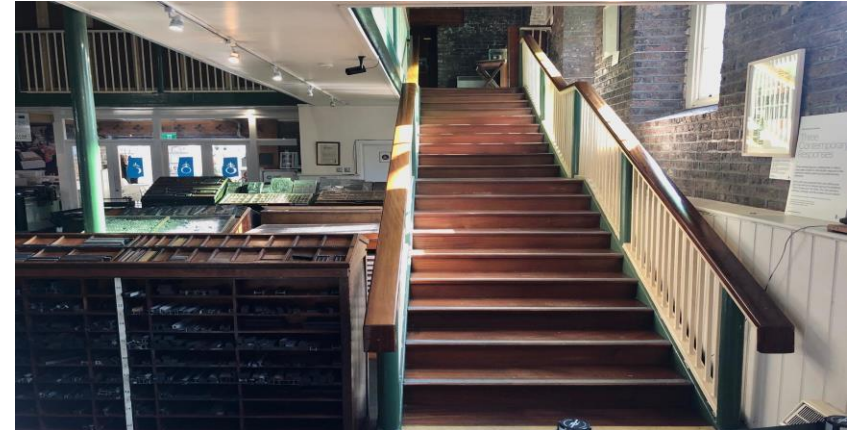


7. How to Get Around

The permanent Exhibition is on the ground level and is self-guided. You can follow the numbers 1-11 on the map to walk through the exhibition in sequence.



Also, feel free explore in whatever way suits you. To see the temporary exhibition space or visit the Creative Corner on the first floor, you can walk up the stairs on the right side. Sometimes, there are school tours of the Museum and they can be noisy and busy.



8. The Main Exhibition

On the ground floor is the main exhibition.
The space is set up like a real print shop from the 1960s!

If you look at the floorplan, you can see how there is a Composing area, a Printing area, and a Finishing area. The floorplan will guide you through the steps of the printing process and shows you how the machines improved over time.

HIGHLIGHTS TOUR

COMPOSING

- 1 Stone
- 2 Linotype
- 3 Monotype Keyboard and Caster
- 4 Last Hotmetal edition of the Sunday Press and Flongs

PRINTING

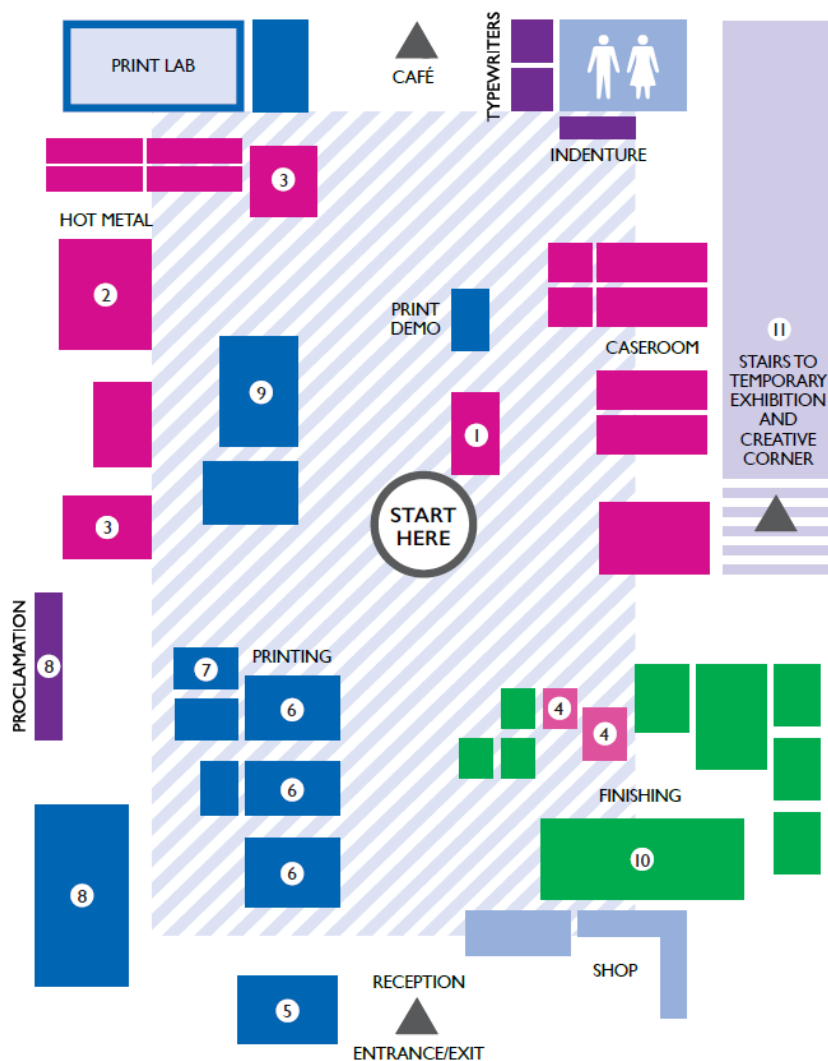
- 5 Gutenberg Press
- 6 Handpresses
- 7 Peerless Platen
- 8 Wharfedale and Proclamation
- 9 Heidelberg Press

FINISHING

- 10 Shaw Pen Ruling Machine

DISCOVER MORE

- 11 Temporary Exhibition and Creative Corner



9. Videos

At different points during your visit, you will see iPads set up which contain interesting videos of the equipment in operation as well as interviews with our craftsmen who run the machines. They will show you how each machine works and talk about why it is important.

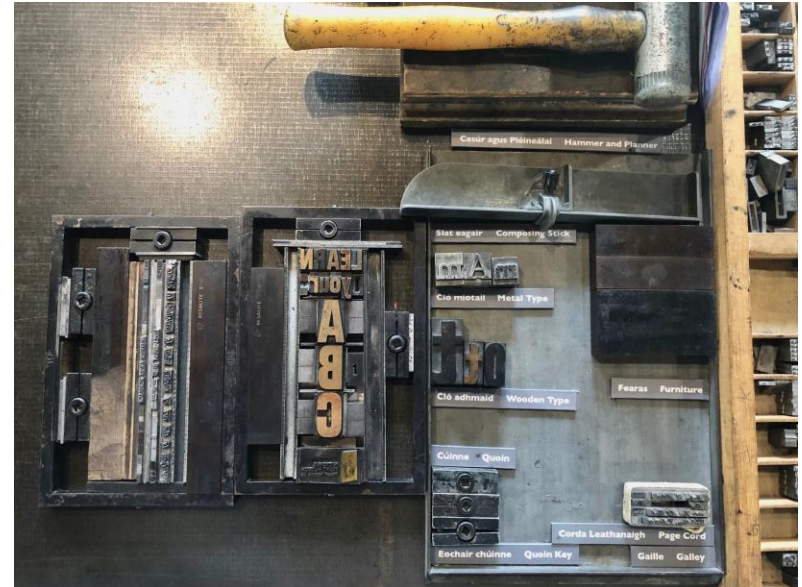


10. Composing

Here you will see Cases of Type, Cases of Furniture, and a Farley Proofing Press. This is where the printing process starts. The lights are very bright over the Cases of Type so that the compositor can see the tiny moveable type and it smells like the ink used to print.



Go over to the Stone and you can touch some moveable type, a composing stick, a quoin and key, and a chase. If you go to Reception, you can ask if you can print a “Wanted” poster with your name on it!



Stone

11. Printing a poster with your name on it!

If you'd like to print a "Wanted Poster" with your name on it, then you can ask a member of staff to assist you with this.

You can wait at reception for staff assistance, and someone will be with you shortly.

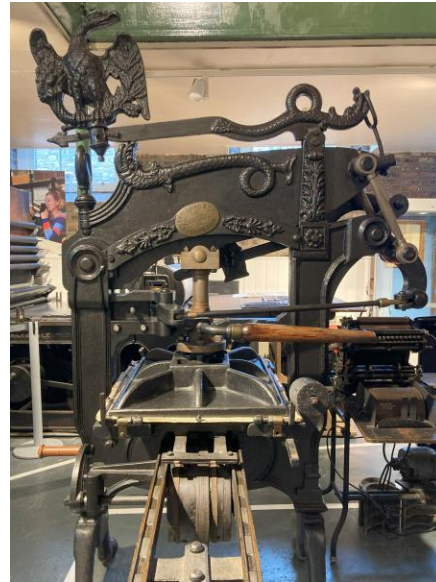


12. Printing

In this area you will see the history of the printing press, from the Wooden Press invented by Gutenberg to the more modern Heidelberg.



You can ask Reception if you can test the difference between the Columbian Press and the Albion Press by pushing the lever.



Columbian Press



Albion Press

13. Finishing

In this area you will see all the different machines used to add final details to prints. You can use the Perforating Machine to perforate a sheet of stamps.

If you come on a Demonstration Day, someone might be using the Shaw Pen Ruler; this machine makes lines on pages like in your notebook. It can be very loud, but it is exciting to watch the paper go underneath the machine!



Finishing Area



Perforating Machine

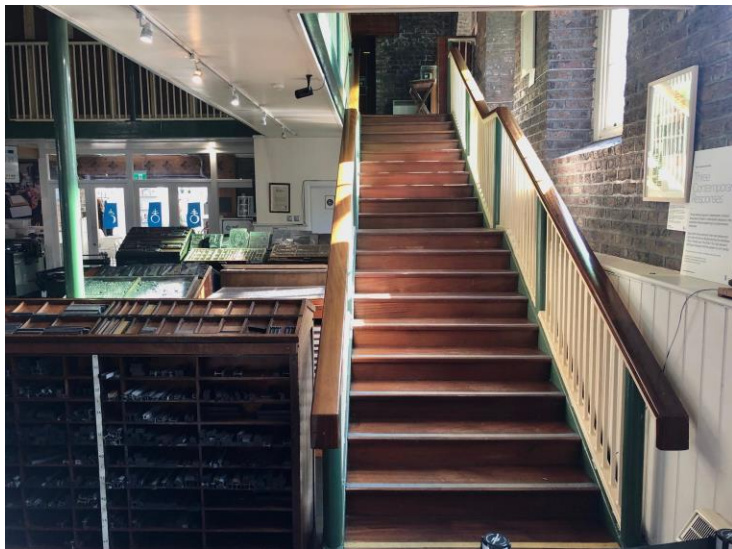


Shaw Pen Ruler

14. The Temporary Exhibition

If you go upstairs, you will find our temporary exhibition. In this space you will find displays of printed material from throughout history. In the past, we've had exhibitions about the first moon landing, Irish printed record covers and women's voting rights in Ireland.

The content of our temporary exhibition changes every few months. If you'd like to know more about our current temporary exhibition, then you can click here here: <https://www.nationalprintmuseum.ie/current-and-upcoming-exhibitions/>



15. Creative Corner

If you walk through the temporary exhibition, you'll find the Creative Corner. This is a space for crafts, where you can make origami shapes, a printer's hat, drawings, stamps, anything you like!



Sometimes we have specific self-guided crafts available for national holidays or related to our temporary exhibitions. Please do drop by during your visit!



16. Café

If you go straight back through the Exhibition, you will see glass doors to the Café. The Café has bright natural light and can be quite busy and noisy, especially around lunchtime. The doors to the Café are heavy and you might need help to open them, but you can ask any of the Staff for help!



17. Evacuation Procedure

If you hear an alarm and a loud voice telling you to leave the Museum, you will need to leave the Museum quickly and calmly by the safest route. The fire exits are the front entrance of the Museum, the back entrance in the Cafe, and the upper exit at the top of the stairs. Museum staff will help guide you to one of these exits.



Cafe entrance



Front entrance



Top of stairs

We hope you have a great visit and we
look forward to meeting you soon!

If you have any more questions about your visit, feel free to email us at
info@nationalprintmuseum.ie or call us at +353 (0)1 660 3770